

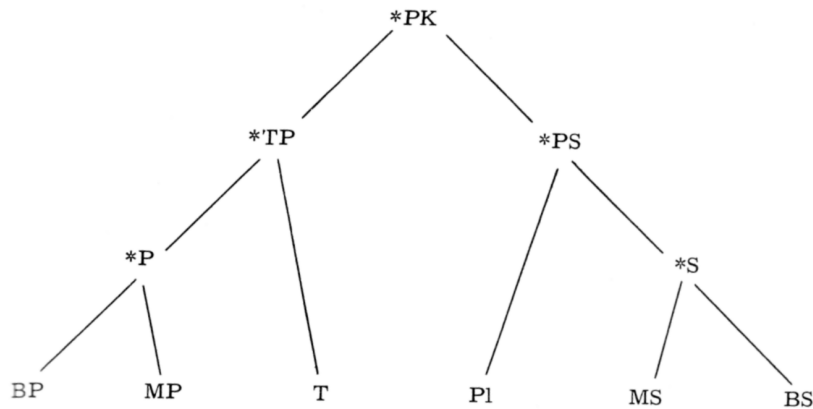
The subgrouping of Karen

Ken Manson

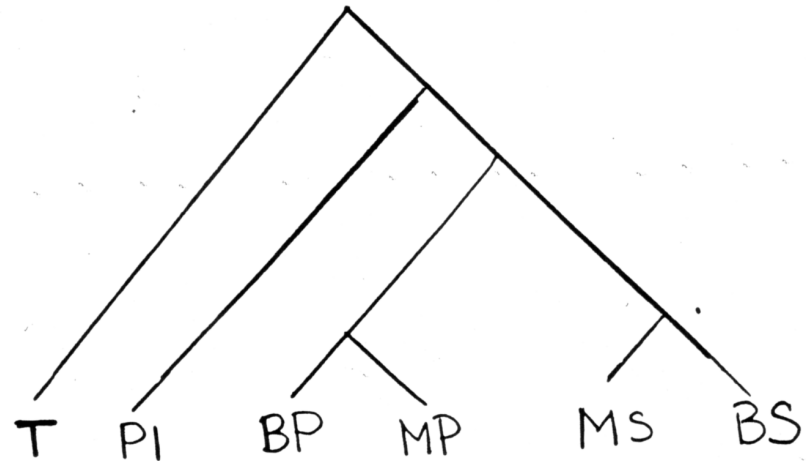


Previous classifications

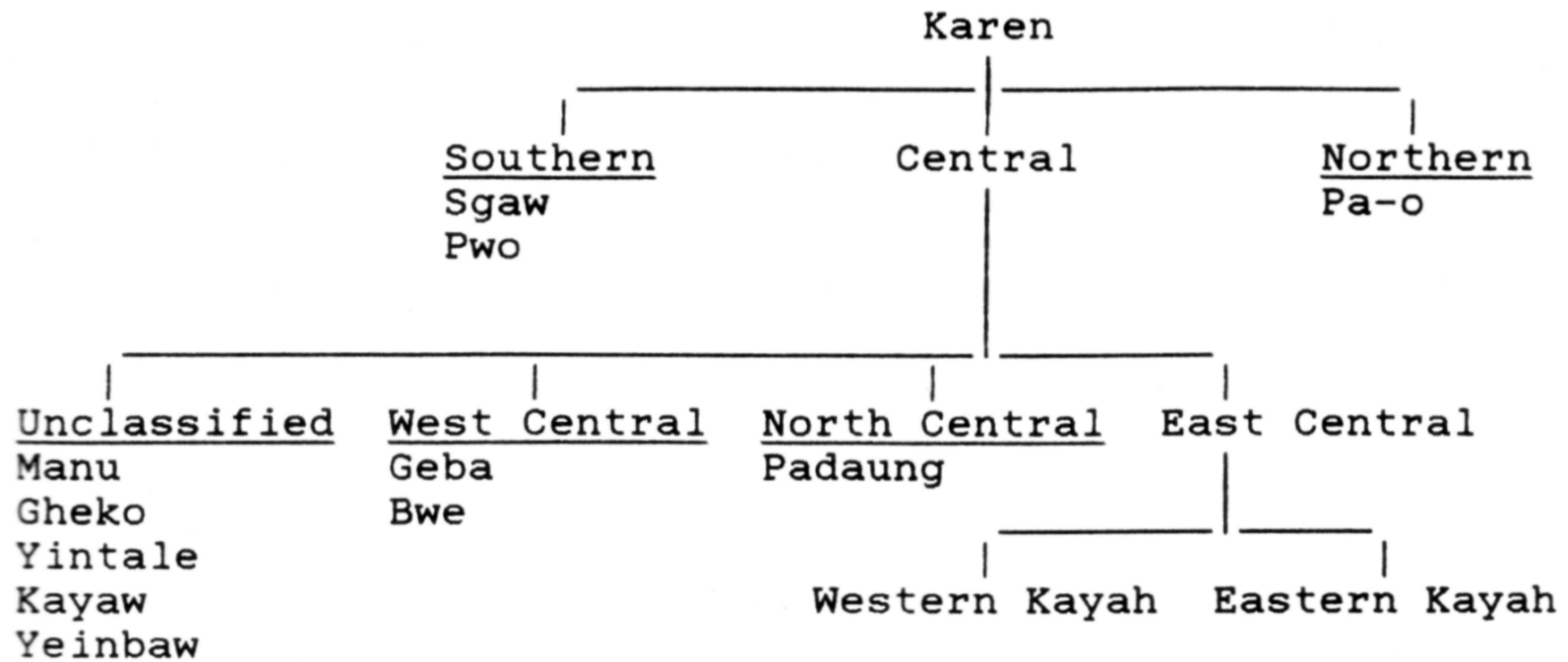
Jones (1961)



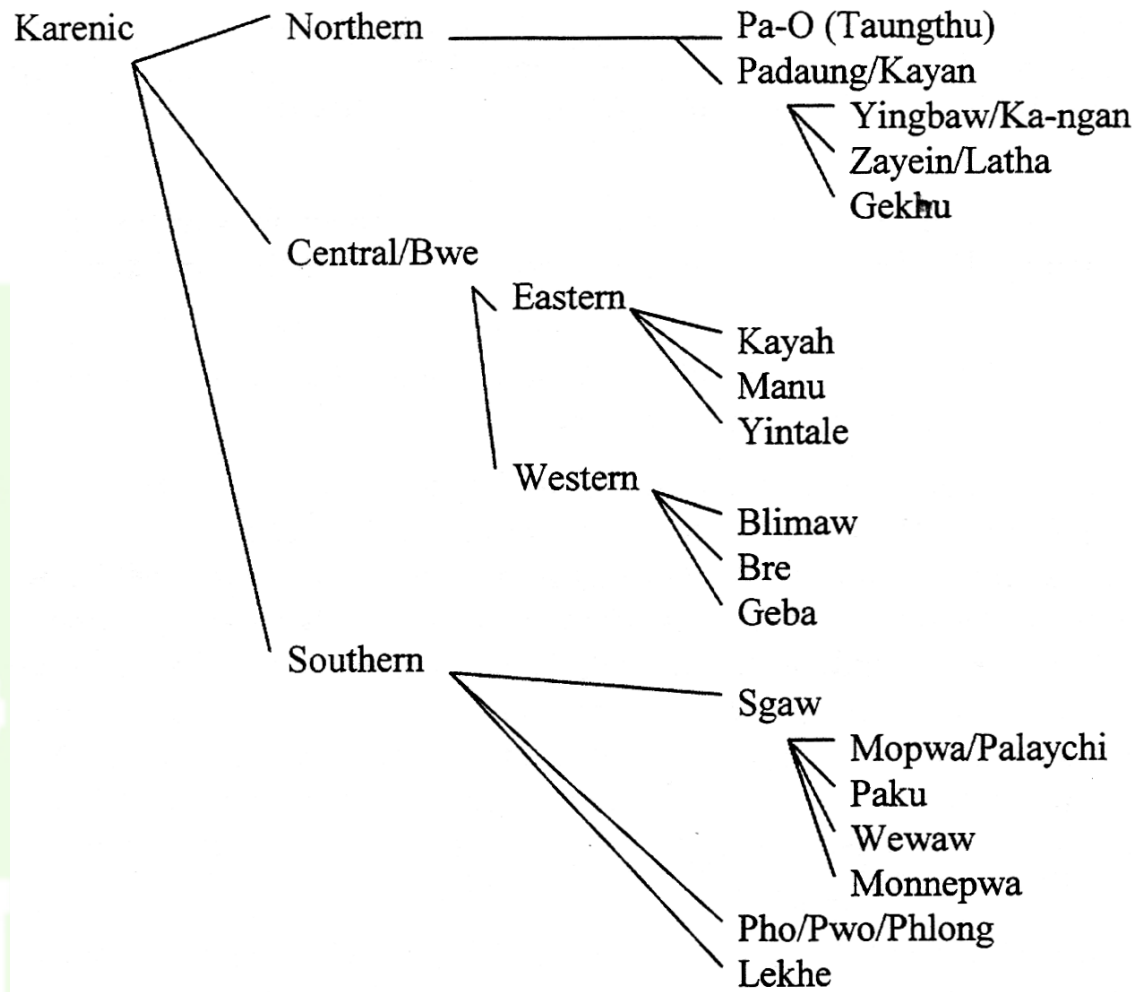
Burling (1969)



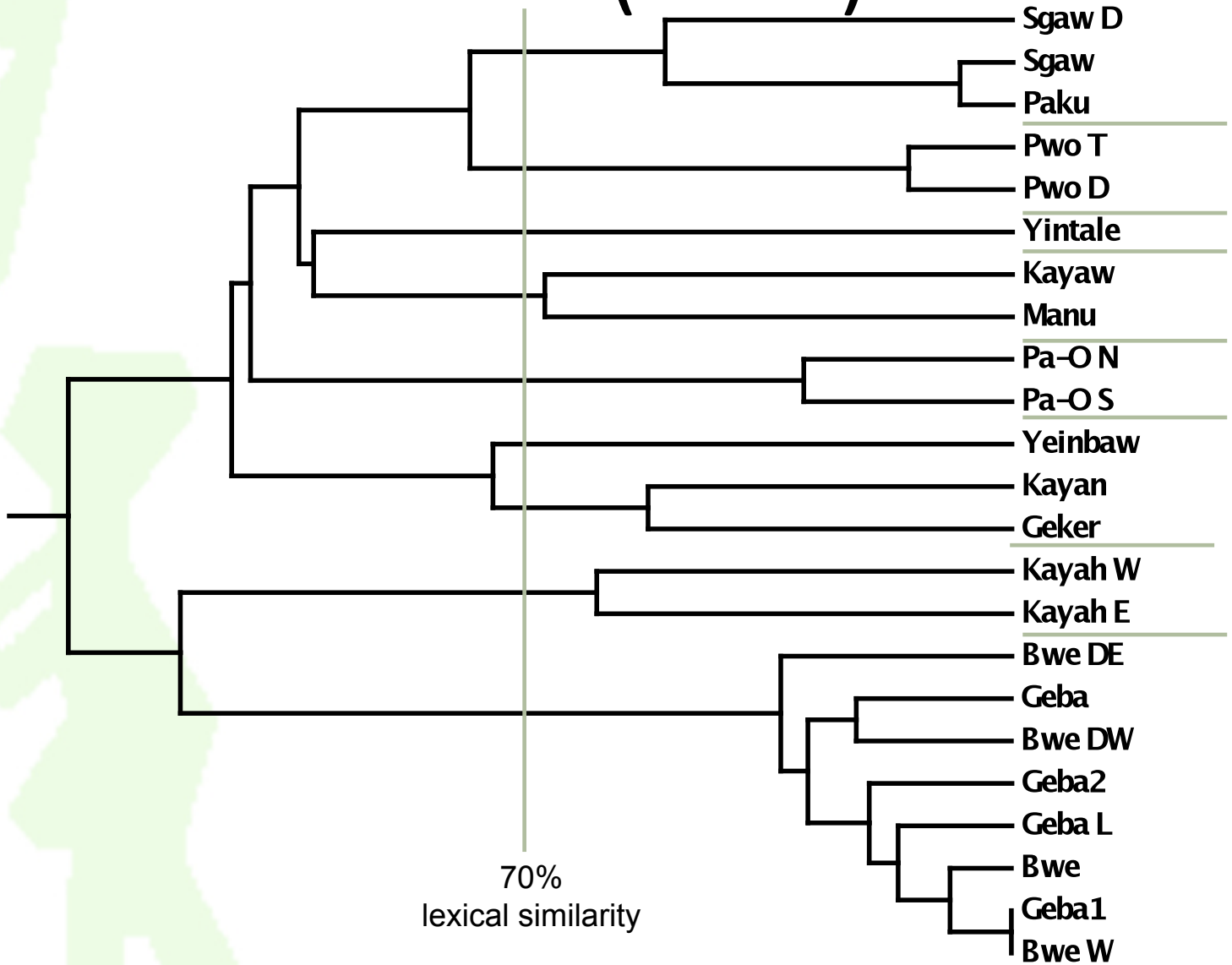
Kauffman (1993)



Bradley (1997)

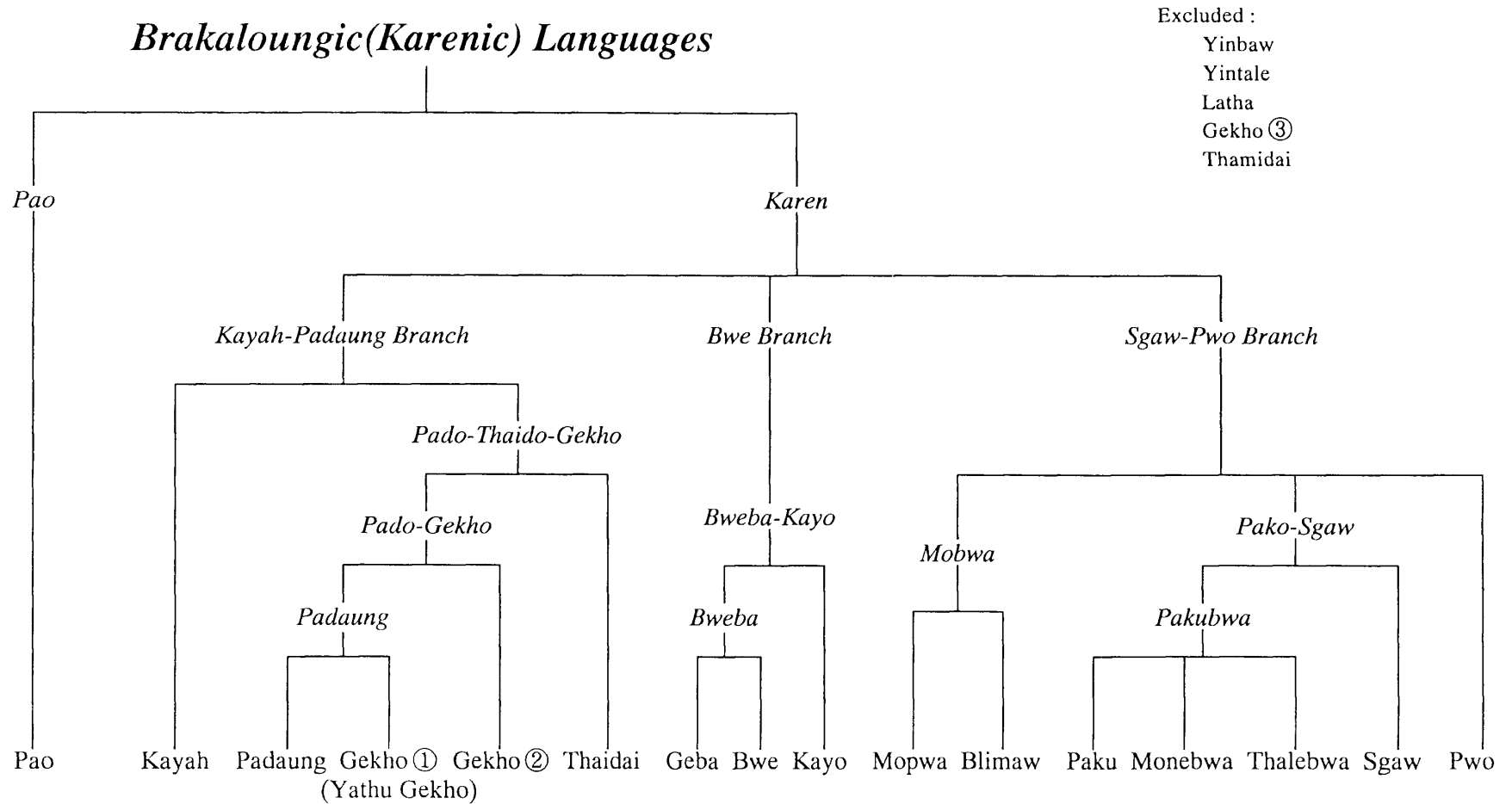


Manson (2002)



Shintani (2003)

Brakaloungic (Karenic) Languages



Location

Pa'O

Lahta

Kayan

E. Kayah

Pwo

Geker Yinbaw W. Kayah

Gekho Yintale

Manu

Sgaw

Geba

Kayaw

Palaychi

Dermuha

Bwe

Paku

Sgaw

Pwo

Pa'O

Karen Tone Box

	A	B	B'	C
*Asp	water branch flower die	star leaf fire bitter	bone child right spicy	sky iron pig shoot
*Vl	ginger navel spear white	egg eat left exist	paddy hand breathe many	alcohol wing heart shout
*Vd	tongue person drunk red	arrow sun stone snake		intestines rib brain eye

Manson, Ken. 2009. Prolegomenon to reconstructing Proto-Karen

Karen Tone Box examples

Kayan tones

	A	B	B'	C
*Asp	5	1	3	3
*Vl	5	1	3	3
*Vd	2̣		3̣	5̣

Sgaw tones

	A	B	B'	C
*Asp	5	2	5	?3
*Vl	5	2	5	?3
*Vd	3		1	?1

Pwo tones

	A	B	B'	C
*Asp	2	5	5	?3
*Vl	1	5	5	?3
*Vd	1		3	?4

Kayah tones

	A	B	B'	C
*Asp	3	1	5	5
*Vl	3	1	5	5
*Vd	1̣		4̣	3̣

Karen proto-cluster tones

5	1	3	3
5	1	3	3
4̣	1̣	2̣	

Kayaw

5	1	3	3
5	1	3	3
2̣	3̣	5̣	

Kayan

5	3	3	3
5	3	3	3
3	3	1	

Bwe Geba

3	1	5	5
3	1	5	5
1̣	4̣	3̣	

Kayah

4	3	5	5
4	3	5	5
1̣	1̣	3̣	

Yintale

5	1	5	5
5	1	5	5
1̣	3̣	5̣	

Yinbaw

5	2	5	5
5	2	5	5
3	2	3	

Paku

1	5	5	5
1	5	5	5
1̣	3̣	4̣	

Manu

5	2	5	3
5	2	5	3
3	1	1	

Sgaw

2	4	2	3
2	4	2	3
1	5	1	

Pa'O

2	5	5	3
1	5	5	3
1	3	4	

Pwo

Karen proto-cluster tones

5	1	3	3
5	1	3	3
4̣	1̣	2̣	

Kayaw

5	1	3	3
5	1	3	3
2̣	3̣	5̣	

Kayan

5	3	3	3
5	3	3	3
3	3	1	

Bwe Geba

3	1	5	5
3	1	5	5
1̣	4̣	3̣	

Kayah

4	3	5	5
4	3	5	5
1̣	1̣	3̣	

Yintale

5	1	5	5
5	1	5	5
1̣	3̣	5̣	

Yinbaw

5	2	5	5
5	2	5	5
3	2	3	

Paku

1	5	5	5
1	5	5	5
1̣	3̣	4̣	

Manu

5	2	5	3
5	2	5	3
3	1	1	

Sgaw

2	4	2	3
2	4	2	3
1	5	1	

Pa'O

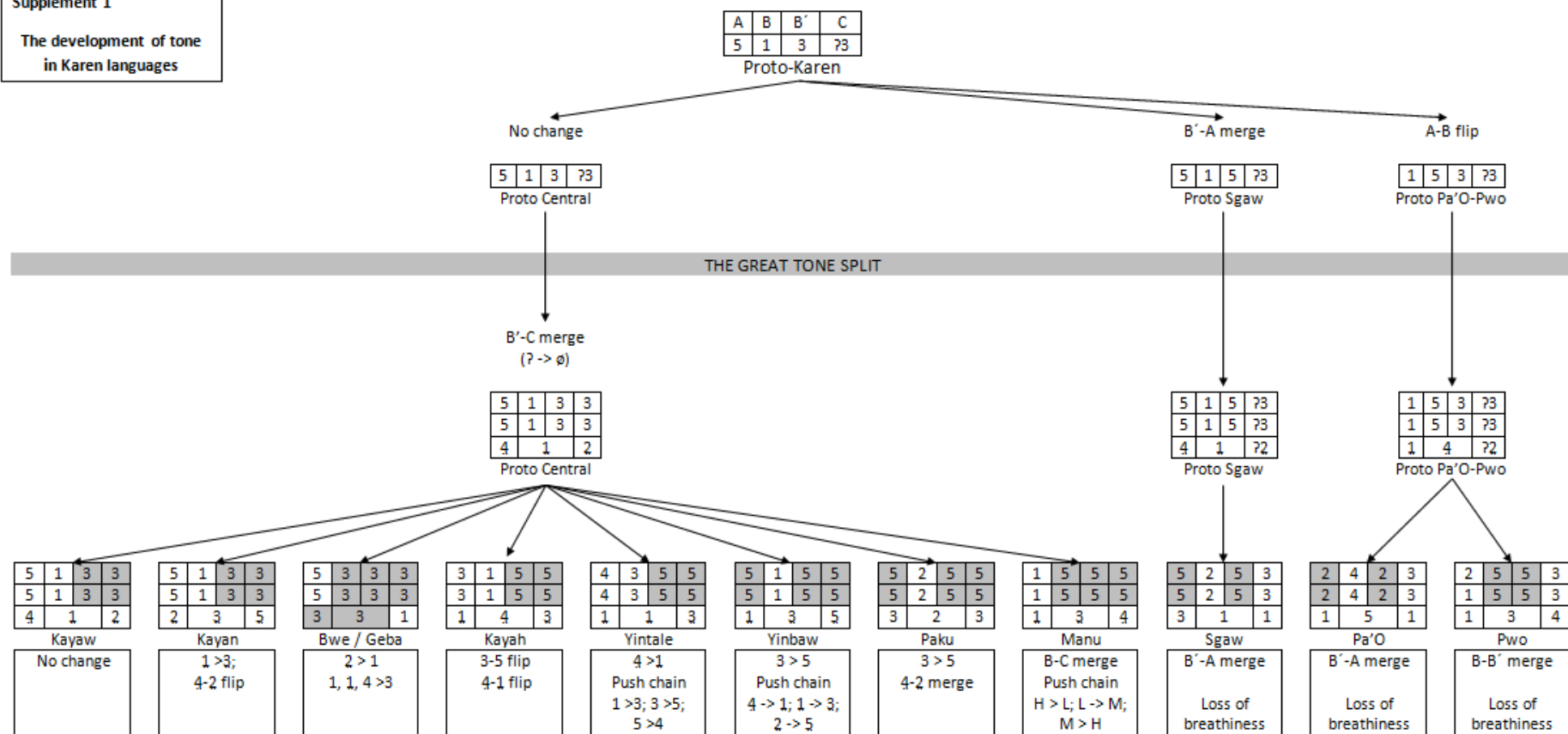
2	5	5	3
1	5	5	3
1	3	4	

Pwo

Tone development in Karen

Supplement 1

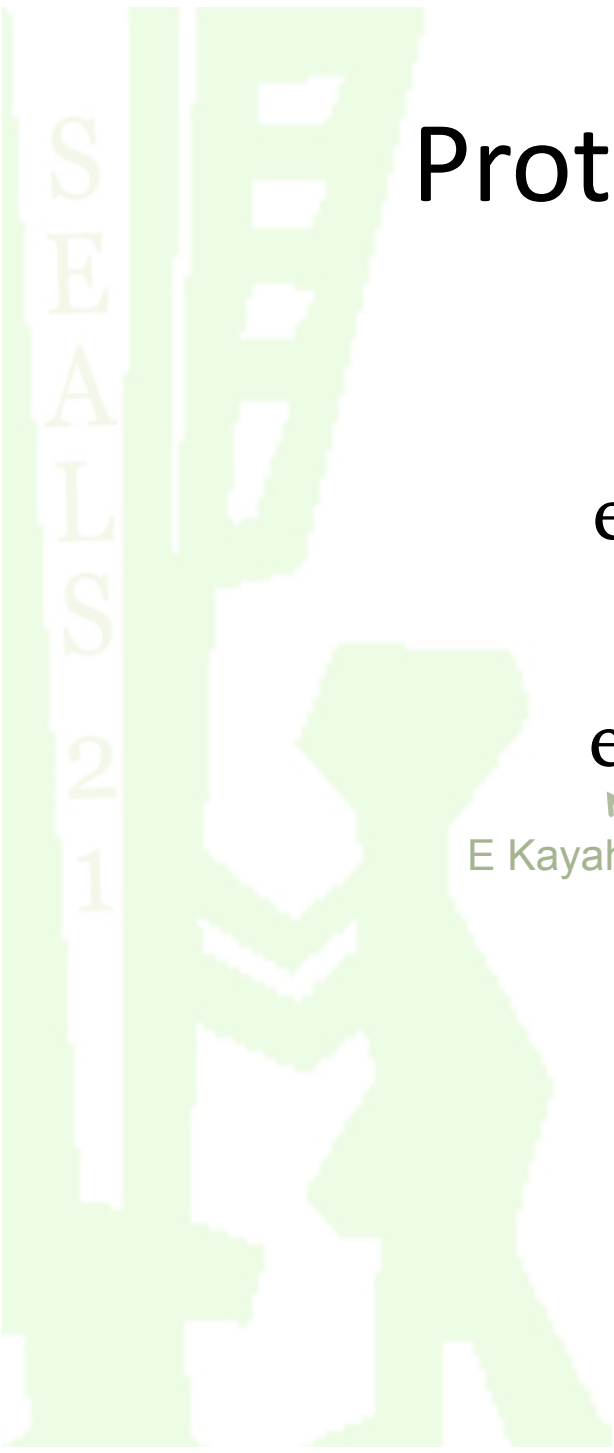
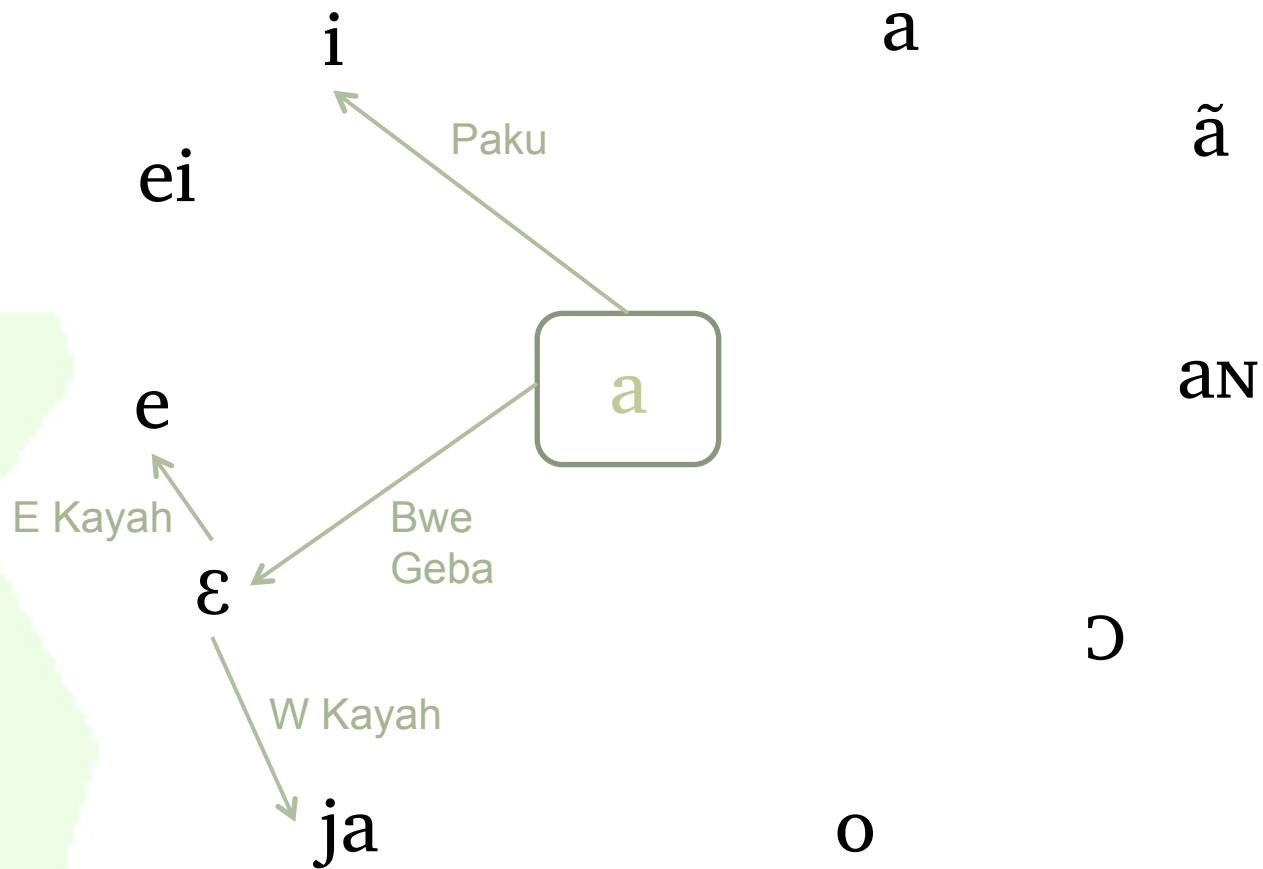
The development of tone in Karen languages



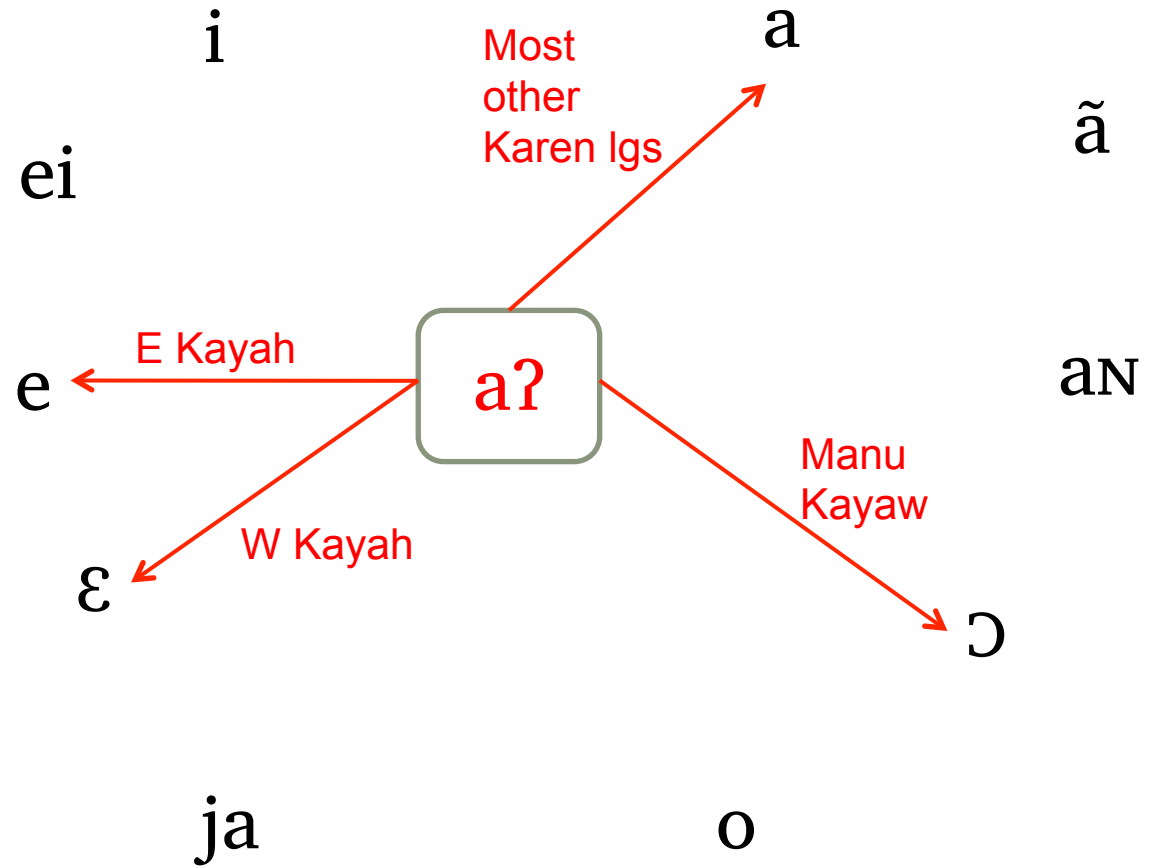
Proto-Karen bilabial initials

- $*p^h$ no change
- $*p > b$ or β
- $*b > p^h$ (Pa'O and Pwo)
- $p^h/p/b + l$
 - $> p^hr$ (Pa'O)
- $p^h/p/b + r$
 - $> p^hr$ (Pa'O, E. Kayah)
 - $> pr$ (W. Kayah)
- pr/br simplified
 - p (e.g. Bwe, Geba, Palaychi, Dermuha, Manu)
 - pj (e.g. Pwo, Paku, Bwe)

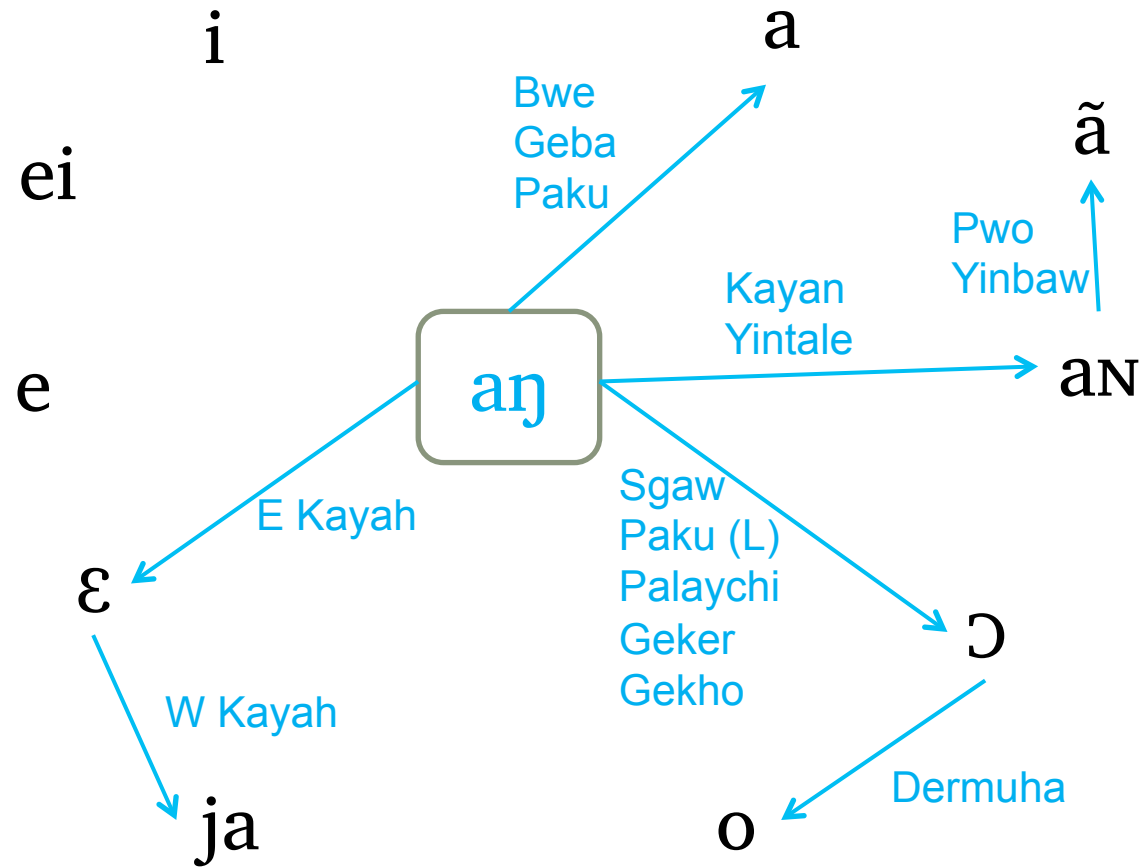
Proto-Karen *a rhymes



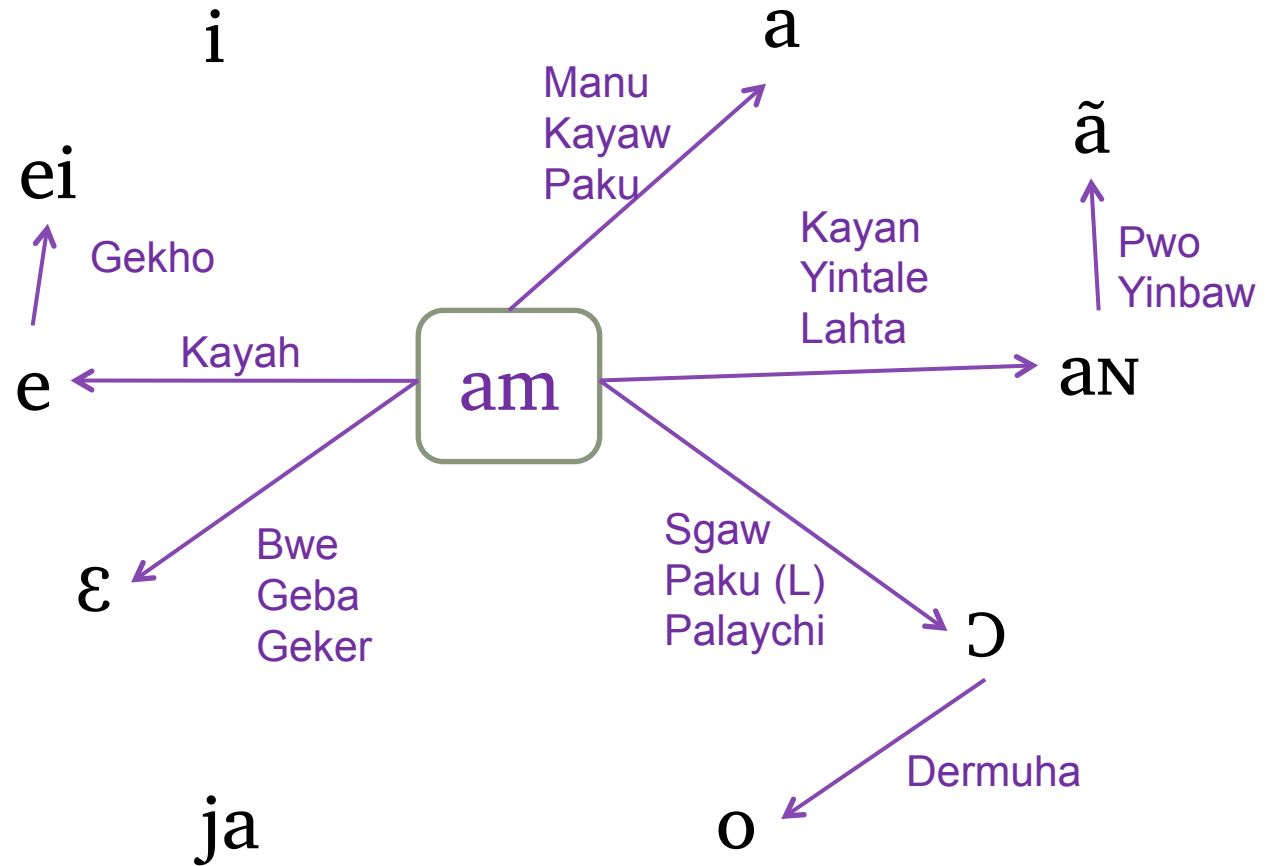
Proto-Karen *aʔ rhymes



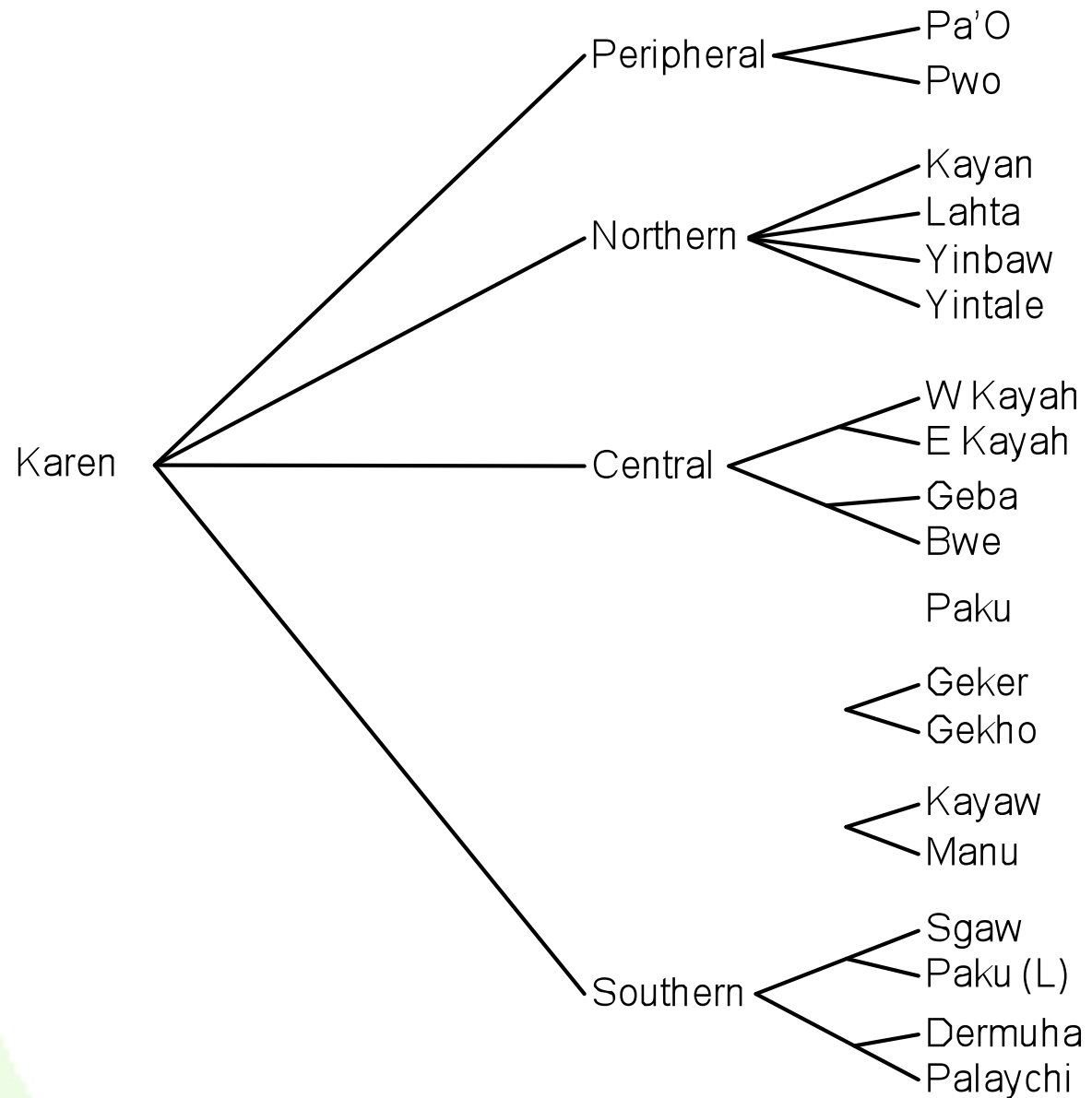
Proto-Karen *aŋ rhymes



Proto-Karen *am rhymes



Karen classification



Karen classification

