

Directional Serial Verb Constructions in Bwe Karen

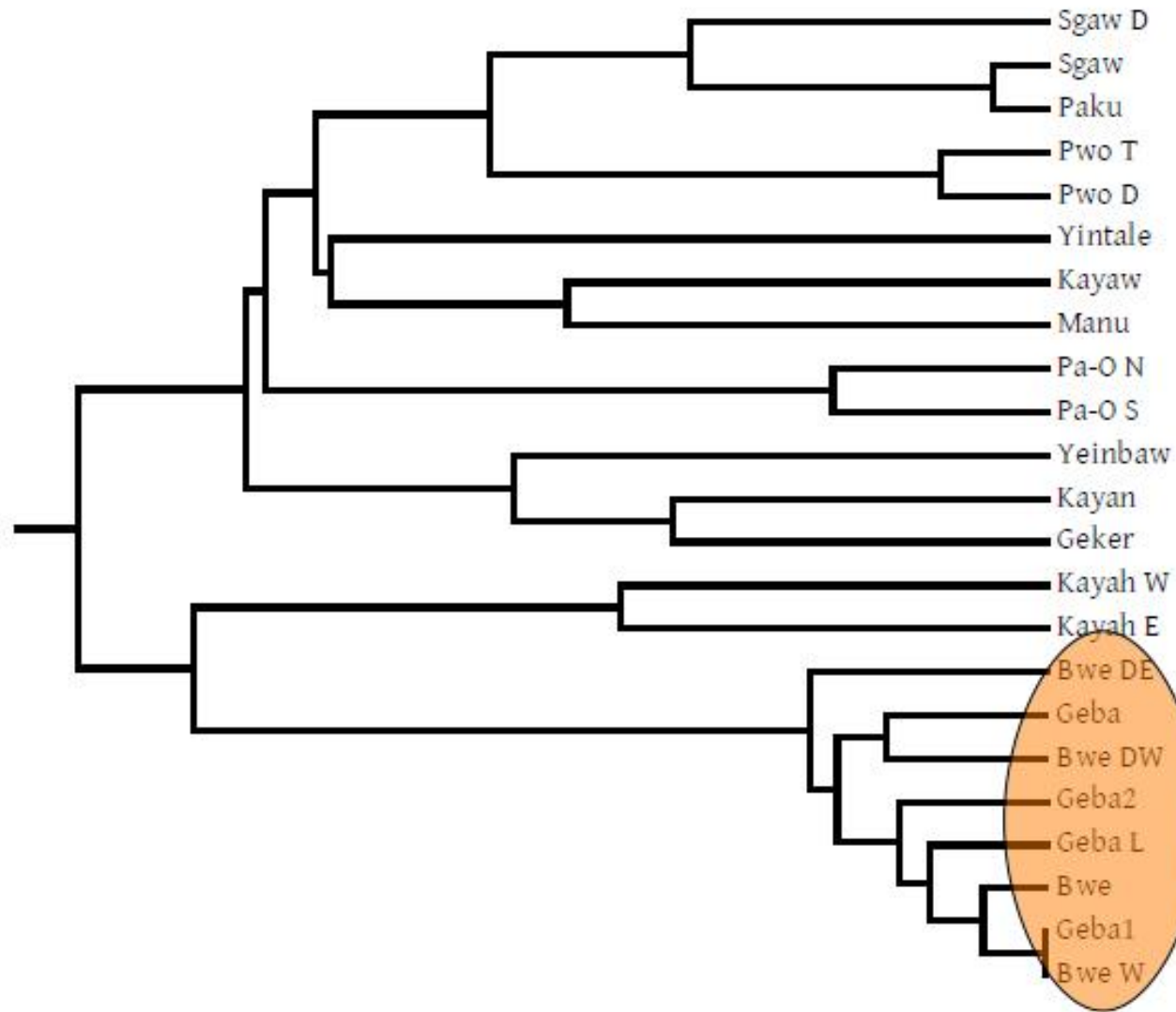
By Kirstie Swanson
Payap University



Objectives

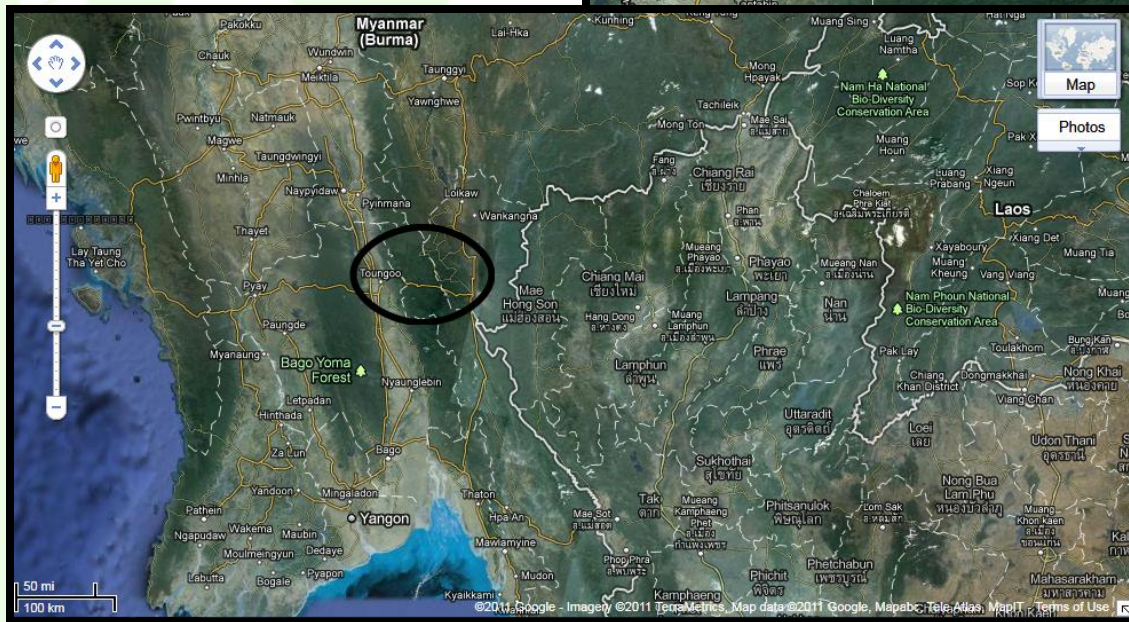
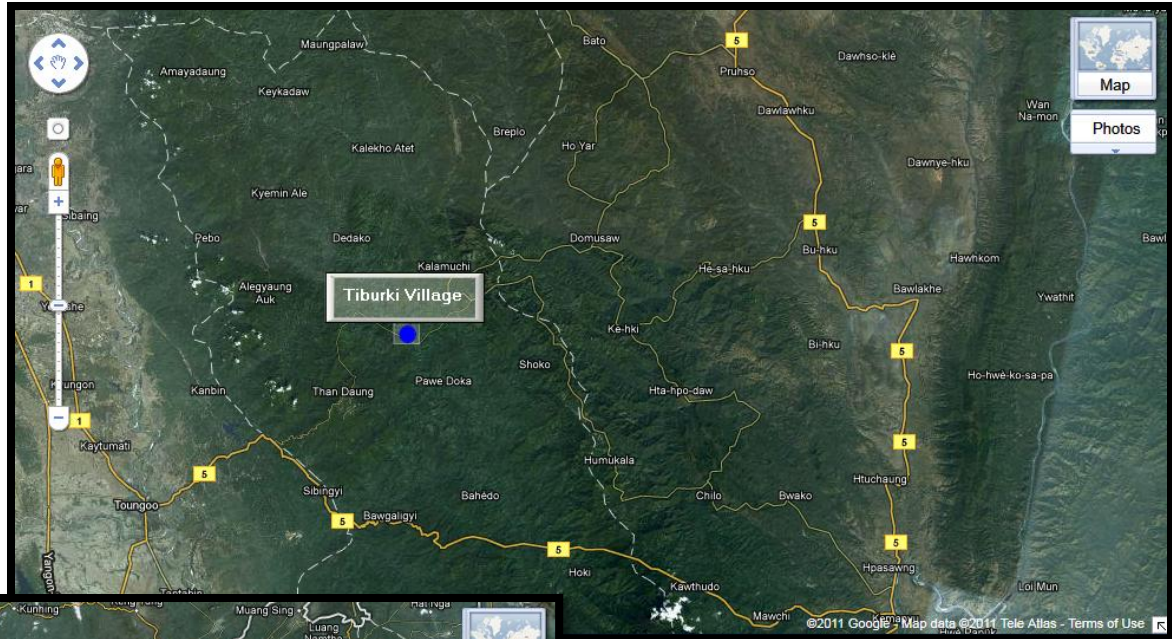
- To use Aikhenvald's (2006) definition of serial verb constructions (SVC) to determine if there are directional SVCs in Bwe Karen.
- To use Aikhenvald's typology to further analyze directional SVCs in Bwe Karen.

Bwe Karen



(Manson 2009)

Location of the Bwe Karen Village



Aikhenvald's Definition of a Serial Verb Construction

A serial verb construction (SVC) is a sequence of verbs which act together as a single predicate, without any overt marker of coordination, subordination, or syntactic dependency of any other sort. Serial verb constructions describe what is conceptualized as a single event. They are monoclausal; their intonational properties are the same as those of a monoverbal clause, and they have just one tense, aspect, modality, and polarity value. SVCs may also share core and other arguments. Each component of an SVC must be able to occur on its own.

(Aikhenvald 2006:1)

6 Criteria for SVCs

1. Two (or more) verbs in one clause
2. Syntactic Independence
3. Single Event
4. Shared Operators
5. Lexical Independence



Directionals in Bwe Karen

Marriage.108

bəya	ḃé	la	dɛadɛ́	dó	ə	bòmú	ə	hi,
bəya	ḃé´	la	dɛadɛ́	dó	*ə	bòmú	*ə	hi
N	V	V	N.Elab	LOC	***	N	***	N
person	put	down	food.drink	LOC	***	female	***	home

They serve the food and drink at the bride's house.

Tugleba.063

jə	khó	gəya	tha	nɛ	lé	dʌ	ʃi	θəbá
jə	khó´	gəya	tha	nɛ	lé´	dʌ	ʃi´	θəba
PRN	vV	V	V	PRN	Pnf	N	V	N
3S	FUT	threaten	up	2S	with	knife	sling.over.shoulder	spear

He will threaten you with sword and spear.

Lexical Independence

Pukheh.179

jə	tha	dó	ə	khí
jə	tha	dó	*ə	khí
PRN	V	LOC	***	N
3S	rise	LOC	***	top

She rose to the top.

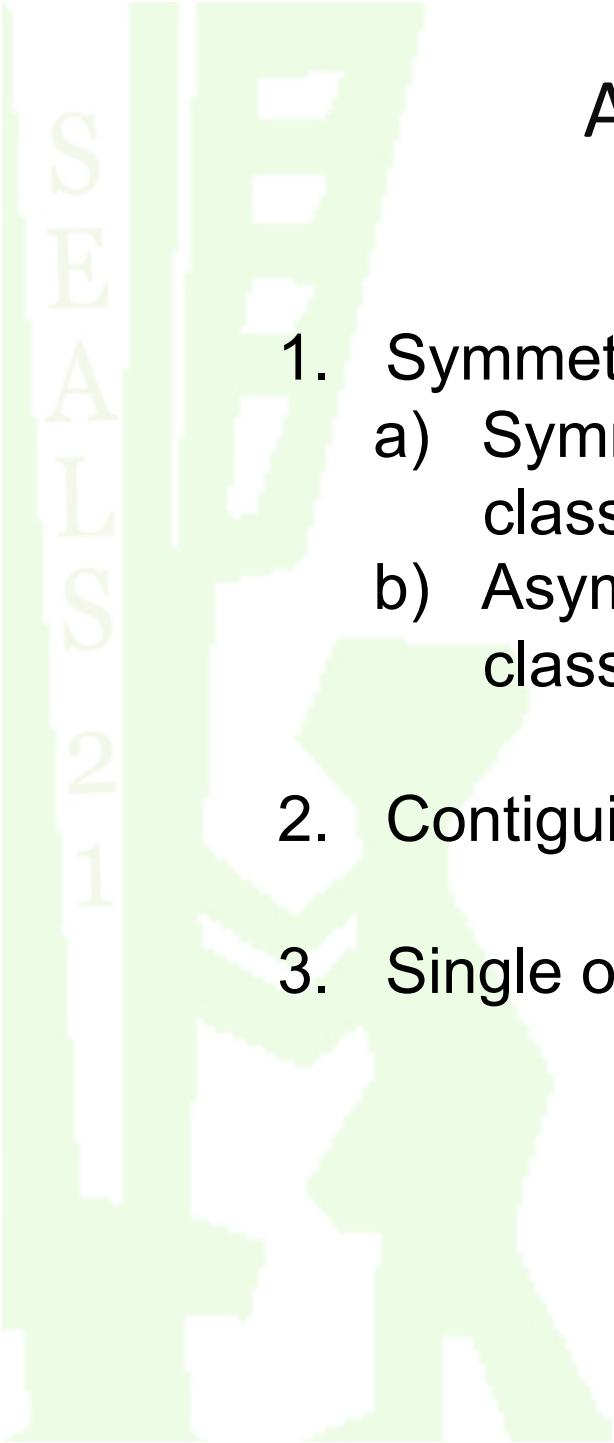
Marriage.095

dəhidεβa	cɔ	nu,	bəya	də	la	cε	θó	có	lɔ.
dəhidεβa	cɔ	nu	bəya	də	la	cε	θó	cɔ́	lɔ
N.Elab	CLF	DEM	N	N	V	PRN	NUM	CLF	ILL.F
meat	some	that	person	knife	descend	3S	three	portion	DECL

The meat is divided into three portions.

Aikhenvald's Typology

1. Symmetry
 - a) Symmetrical – two verbs from an open class
 - b) Asymmetrical – one verb from an open class and one from a closed class
2. Contiguity
3. Single or Concordant Operational Marking



Directionals in Bwe Karen

Marriage.108

bəya	ḃé	la	dɛadɛ́	dó	ə	bòmú	ə	hi,
bəya	ḃé´	la	dɛadɛ́	dó	*ə	bòmú	*ə	hi
N	V	V	N.Elab	LOC	***	N	***	N
person	put	down	food.drink	LOC	***	female	***	home

They serve the food and drink at the bride's house.

Tugleba.063

jə	khó	gəya	tha	nɛ	lé	dʌ	ʃi	θəbá
jə	khó´	gəya	tha	nɛ	lé´	dʌ	ʃi´	θəba
PRN	vV	V	V	PRN	Pnf	N	V	N
3S	FUT	threaten	up	2S	with	knife	sling.over.shoulder	spear

He will threaten you with sword and spear.

Conclusion

- The above data show that directional multi-verb constructions in Bwe Karen meet Aikhenvald's five criteria for serial verb constructions.
- In addition, directional SVCs can be typologically classified as asymmetrical, contiguous, and single marking as per Aikhenvald's criteria

Sources

- Aikhenvald, Alexandra Y. 2006. Serial verb constructions in typological perspective. In *Serial verb constructions: A cross-linguistic typology*, eds. Alexandra Y. Aikhenvald & R. M. W. Dixon 1-68. Oxford: Oxford University Press.
- Bradley, David. 1997. Tibeto-Burman languages and classification. In *Papers in Southeast Asian linguistics 14. Pacific Linguistics A-86*, ed. David Bradley 1-71. Canberra: Pacific Linguistics.
- Henderson, Eugénie J. A. 1997. *Bwe Karen dictionary, with texts and English-Karen word list*. London: SOAS.
- Manson, Ken. 2009. Prolegomena to reconstructing Proto-Karen. *La Trobe University Working Papers in Linguistics 12*.
- Manson, Ken. 2010. A grammar of Kayan, a Tibeto-Burman language. La Trobe University: PhD.