

The intonation of repair initiations in Northern Vietnamese

Evidence from multi-word utterances

Kieu-Phuong Ha and Martine Grice
IfL Phonetik
University of Cologne

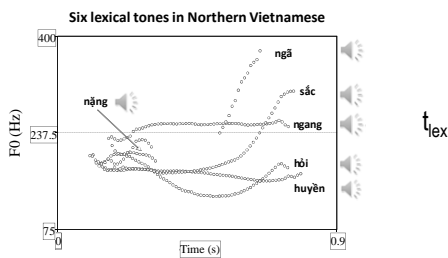


Structure of the talk

1. Introduction
 - Tonal system in Northern Vietnamese
 - Repair initiation and previous investigations
 - Aims of this study
2. Speech materials and methods
3. Qualitative analysis
 - Multi-word utterances
4. Conclusions



Tonal system



Repair initiation (RI)

- **Repair**: strategy in conversation dealing with problems hearing or understanding utterances (Schegloff et al. 1977, Ochs et al. 1996)
- **Repair sequence**: trouble source turn – initiation of repair – performance of repair

F: This is nice, did you make this? Trouble source turn
 K: No. Samu made that. Initiation of repair specific initiator
 F: Who? Performance of repair
 K: Samu. Initiation of repair
 (Schegloff et al. 1977: 367–368)

Trouble source turn → Debby: [.hhh
Initiation of repair → Shelly: [you were at the halloween thing.
Performance of repair → Debby: → huh? **open class initiator**
 Shelly: the Halloween p[arty
 Debby: [righ].
 (Sidnell 2010: 120)

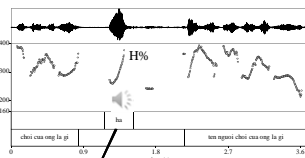


Introduction: Previous investigations

1_Computergame

- 1 M1 ở (0.5s) đợi đợi nó đang chạy ở ngoài đã
yes, wait wait, it's running outside
- 2 (...)
- 3 phòng bao [nhiều
in which room are you?
- 4 M2 [...] (approx. 0.2s) chơi của ông là gì?
What's your nickname?
- 5 M1 (-) hà
pardon?
- 6 M2 (-) tên người chơi của ông là gì:
What is your nickname?
- 7 M1 (-) àm ở câu tí
Eh ah Cuti.

(Ha 2012, Ha to appear)



lexically falling-rising



Introduction: Previous investigations

Investigation of one-word utterances

Final particles and function words

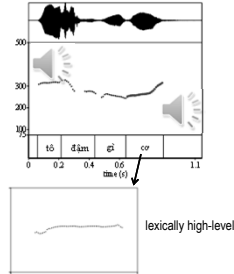
Word	Citation form	Stylised tone contour	Gloss	Denotation of lexical tone	Repair initiation in slow/careful speech	Repair initiation in fast speech
hỏi [ho]	falling (-rising)		question particle	hỏi (C1)		
gì [zi]	low-level (or falling)		what	huyền (A2)		
ừ [zo]	falling-glottalised		yes (polite form)	nặng (B2)		
ai [ai]	high-level (or mid-level)		who	ngang (A1)		
sao [sao]	high-level (or mid-level)		why/how	ngang (A1)		
ơ [ơ]	high-level (or mid-level)		vocative particle	ngang (A1)		



Multi-word repair initiations

Homework: 20_2_2

- M1 hai chấm gạch đầu dòng
Colon, then a new bullet point.
(--)
- M11 rồi
OK.
- M1 tô đậm (→) tính chất kì lạ lớn lao
Emphasise the brilliant and novel features.
(4.3s)
- M11 tô đậm gi (co)
Emphasise what final particle
Emphasise what?
(--)
- M1 tô đậm tính chất kì lạ lớn lao
Emphasise the brilliant and novel features.
(2.7s)
- M11 rồi
OK.



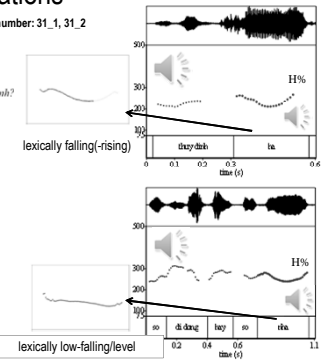
IFL, Phonetik Köln

13

Multi-word repair initiations

- F2 thỉnh thoảng hôm nào rồi chỉ lên
When I have time sometimes I will come to visit you.
Yes.
- F20 [vâng]
Yes.
- F2 từ cho chỉ xin cái số điện của thầy định cái
Yes. Can you give me the telephone number of Thuy Dinh?
(0.5s)
- F20 thầy định (h) Thuy Dinh (h) question particle
Thuy Dinh?
(0.5s)
- F2 ừ
Yes.
- F20 số di động hay số (nh) nhà
number mobile or number home?
Mobile number or landline number?
(4)
- F2 số a vĩa đi động vĩa nhà để họ nếu đi động không có
Ah both, so if I can't reach her via mobile phone
sẽ gọi nhà cho chỉ cả hai
then I'll try the landline one. Give me both!
(1.5s)
- F20 chỉ ề chỉ chờ em tí
Wait a moment!
- F2 ừ ừ
Yes, yes.

Telephone number: 31_1, 31_2

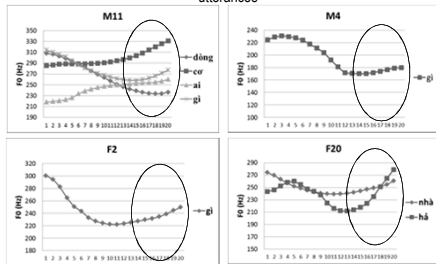


IFL, Phonetik Köln

14

Overall results

Time-normalized F0 contours on final syllables across the investigated utterances



Σ = 19 syllables/utterances

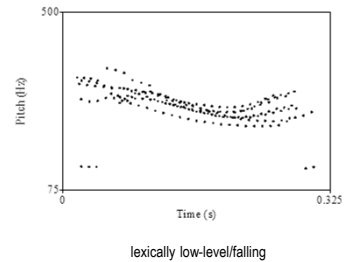
IFL, Phonetik Köln

15

Results: final high pitch/rising intonation

Final syllable in RIs

Speaker M11



n=7

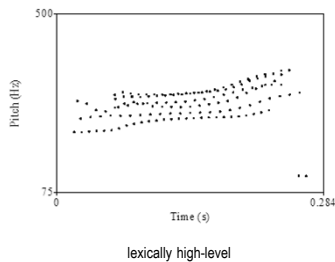
IFL, Phonetik Köln

16

Results: final high pitch/rising intonation

Final syllable in RIs

Speaker M11



n=5

IFL, Phonetik Köln

17

Conclusions

- The high pitch found in one-word repair initiations conveying problems hearing or understanding the other speaker's turn/utterance is also found in multi-word utterances.
- The domain in which this intonation has an effect is the final syllable/word.
- The results support the analysis of the rise as a high boundary tone following the lexical tone of the final syllable.

IFL, Phonetik Köln

18

